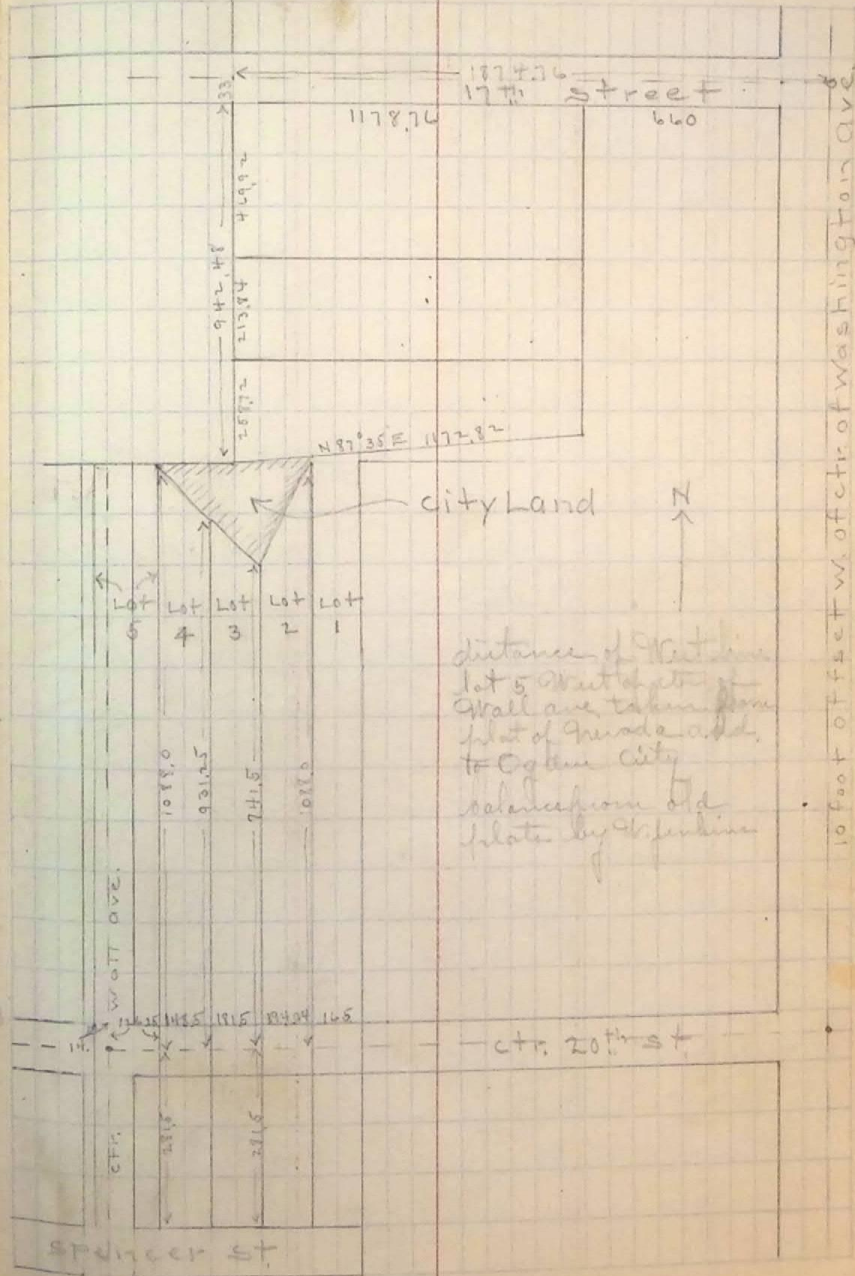


Apr. 6 1905

Survey of city land West of Washington Ave.

A. H. P. Int. }  
 D. D. G. chain } 1 P.M. to 5 P.M.  
 H. B. S. chain }

Int over Int. set to Wall B.S. on Int. 23<sup>rd</sup> Wall turn 180° check same set intersection nails at 20<sup>th</sup> Wall Int. over hub. at 20<sup>th</sup> & Riverside same B.S. on Mountain East turn 180° check same set intersection nails at 20<sup>th</sup> & Wall use string for intersecting set hub. Int over hub then set. F.S. on Mountain East angle right 90° or to Int. at 20<sup>th</sup> & Wall. this intersection is close than one minute error must be in data on Wall ave. from this hub I measure East along center of 20<sup>th</sup> st. 274.75 set nail = sta. 1 also East line lot 4 Int. over sta. 1 F.S. on Mountain East turn angle 90° measure 700. ft. to sta. 2 Int. over sta. 2 F.S. on Ben Leonard north measure 231.25 set hub and tack = sta. 3 also North East cor. lot 4. Int. over sta. 2 F.S. on Ben Leonard north angle right 90° measure 181.5 ft. set nail = sta. 4. also East line lot 3. Int. over sta. 4 B.S. on sta. 2 angle right 90° measure 41.5 ft. set hub = N.E. cor. lot 3 put for night



distance of West line lot 5 West of ctr. of Wall ave taken from Hub of Riverside and to Ogden City calculated from old plat by H. B. S.